



THE  
**EPIC ICONIC**  
1 & 2 BEDROOM APARTMENTS

*Starting From*

**KES. 3.3 M**

---

**BOOK NOW: 0792 857473 OR 0792 888801**



# Who We Are

At The Epic Properties, we've redefined the landscape of real estate **since our inception in 2015**. Our journey has been marked by unparalleled success, with every property we've developed being not just sold, but meticulously managed to ensure the utmost satisfaction of our residents.

What sets Epic apart is our **holistic approach**. We don't just build homes; we create **vibrant communities**. From development to marketing and seamless management, our commitment to excellence is unwavering. We don't just construct structures; **we craft lifestyles**.

Join us on a journey where innovation meets affordability, and where homeownership is not just a dream but a reality. **Welcome to The Epic Properties.**



# *Our Latest* **Project**

The **Epic Iconic** is the latest project by The Epic Properties Ltd., set to redefine modern living. It is conveniently located 7km from Westlands, 1.5km from New Kitisuru and 100m from the main road.

- **1 Bedroom - Kes 3.3m**
- **2 B/Room - Kes 6m**







# Apartments for Sale

WITH AFFORDABLE

## INSTALLMENT PLAN

**10% BOOKING FEE; 20% FOR SALE AGREEMENT**

**BALANCE TO BE PAID IN 10 MONTHLY INSTALMENTS**

**1 BEDROOM - KSH. 3.3M**

**Expected Rent - Kes. 23,500**

**2 BEDROOM - KSH. 6M**

**Expected Rent - Kes. 40,000**



# About the Property

**The Epic Iconic** is the latest project by The Epic Properties Ltd., set to redefine modern living in **Kibichiku, near New Kitisuru** in Kiambu County. With a total of **120 apartments** in a mix of **1BR and 2BR** configurations, The Epic Iconic offers a blend of **luxury, comfort, and convenience.**

Building on the success of previous projects, The Epic Properties Ltd. continues its **commitment to excellence in real estate** development. The launch event for The Epic Iconic is scheduled for **March 2024**, followed by the **groundbreaking ceremony** to commence construction.





# 1 Bedroom

*Apartment*

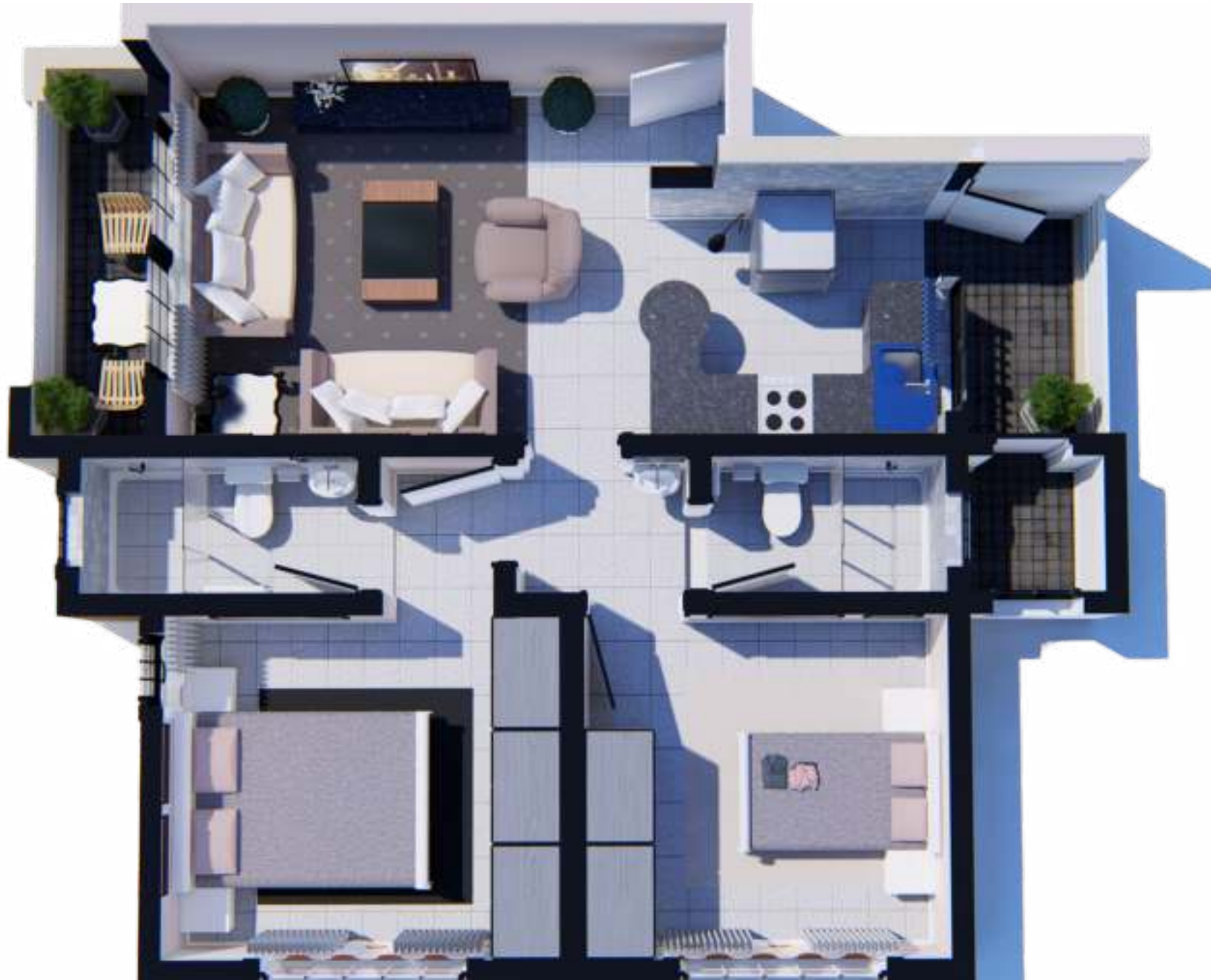
**Price:** **Kes 3,300,000**

**Size:** 43 square metres

**Exp. Rent** Kes. 23,500

**Location:** 15km from Nairobi CBD  
7km from Westlands  
1.5km from New Kitisuru  
100m from the main road





# 2 Bedroom *Apartment*

**Price:** **Kes 6,000,000**

**Size:** 70 square metres

**Exp. Rent:** Kes 40,000

**Location:** 15km from Nairobi CBD  
7km from Westlands  
1.5km from New Kitisuru  
100m from the main road

# REQUIREMENTS & PAYMENT DETAILS

## WE WILL REQUIRE THE FOLLOWING DOCUMENTS:

1. Copies of ID/Passport
2. Copies of KRA Pin certificate
3. Postal address
4. Next of kin details
  - a. Phone number
  - b. Email address

## BANKING DETAILS:

**ACCOUNT NAME:** THE EPIC PROPERTIES LIMITED

**ACCOUNT NUMBER:** 2054283201

**BANK:** HFCK

**BRANCH:** HURLINGHAM





*Get in  
Touch!*

**ADDRESS:**

Westlands Karuna road,  
Western Heights Building  
4th floor suite 7.

**TELEPHONE:**

0792 857 473/4 or 0792 888 801



**ENQUIRY:**

[epicpropertiesinfo@gmail.com](mailto:epicpropertiesinfo@gmail.com)

[info@epicproperties.co.ke](mailto:info@epicproperties.co.ke)

[sales@epicproperties.co.ke](mailto:sales@epicproperties.co.ke)